



Pro-Bel Group Ltd.
765 Westney Road South
Ajax, Ontario, Canada L1S 6W1

Toll Free: (800) 461-0575
Tel: (905)-427-0616
Fax: (905)-427-2545
Email: info@pro-belgroup.com

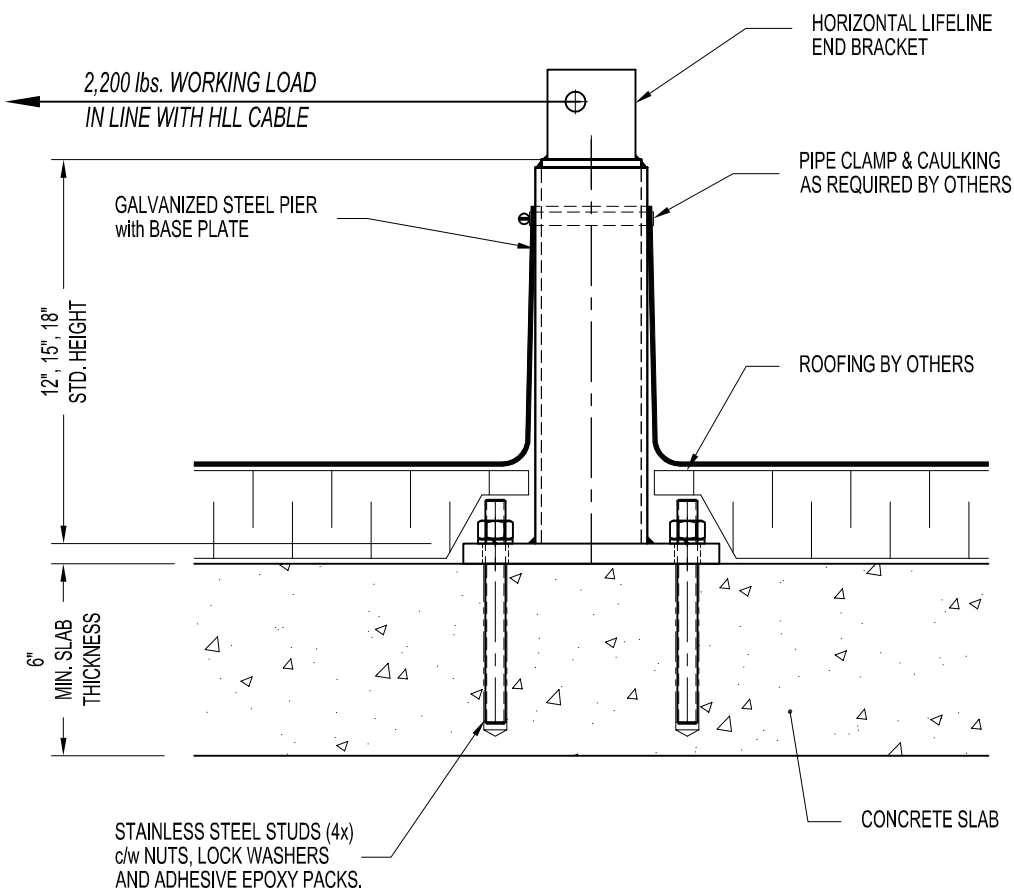
NOTES:

1. 2,200 lbs. WORKING LOAD IN LINE WITH HLL CABLE (WHEN USING PRO-BEL IN LINE SHOCK ABSORBER- PRO-SHOCK).
2. ASSEMBLY SHOWN IS 12", 15" & 18" HIGH STANDARD MODELS.
3. MINIMUM CONCRETE SLAB THICKNESS TO BE 6".
4. ASSEMBLY SHOWN WITH CONVENTIONAL SINGLE PLY ROOFING (BY OTHERS) - NO FLASHING.

IMPORTANT:

1. HORIZONTAL LIFELINE ANCHORS ARE DESIGNED TO A MAXIMUM FORCE OF 2,200 lbs. (9.8 KN) WHEN USING "PRO-SHOCK", WITH A FACTOR OF SAFETY OF 2 WITHOUT ANY PERMANENT DEFORMATION, FRACTURE OR DETACHMENT.

2. IT IS THE RESPONSIBILITY OF THE STRUCTURAL ENGINEER FOR THE OVERALL PROJECT TO ENSURE THAT THE STRUCTURE ON WHICH THE SAFETY EQUIPMENT BY PRO-BEL IS INSTALLED, IS REINFORCED TO WITHSTAND THE LOADS INDICATED ON THIS DRAWING.



MAX. LIMIT = 18"

HLL-78E-00A4: ADHESIVE HLL END ANCHOR