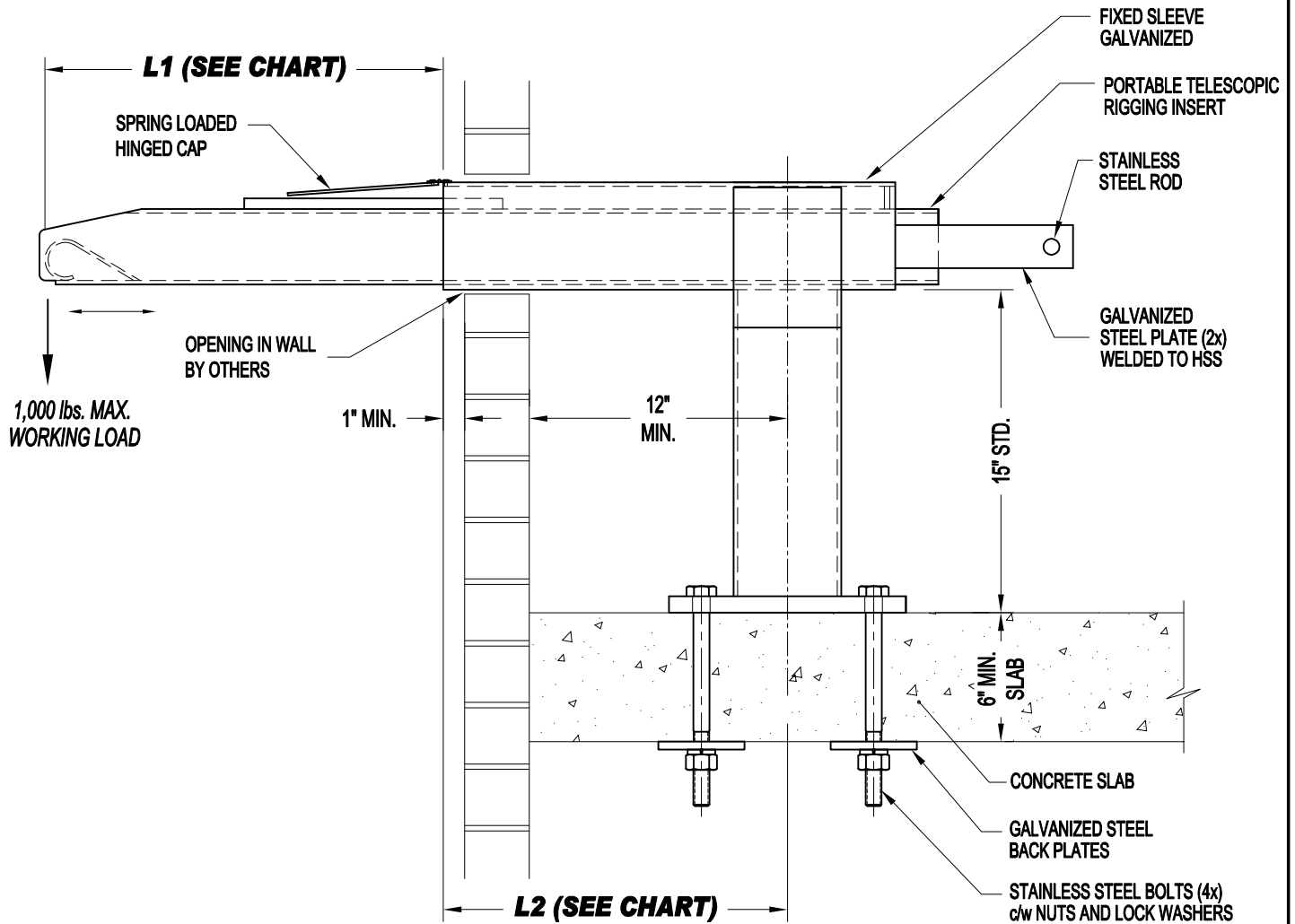


**NOTES:**

- 1,000 lbs. WORKING LOAD IN VERTICAL DIRECTION.
- ASSEMBLY SHOWN IS 1-BAR SLEEVE DESIGN. WORKER'S LIFELINE TO BE TIED TO INDEPENDENT ANCHOR.
- MINIMUM CONCRETE SLAB THICKNESS IS 6".

LIMIT CHART	
L1	L2
18" MIN.	35" MAX.
24" (STD.)	29" MAX.
28" MAX.	25" MAX.



**IMPORTANT:**

- RIGGING SLEEVES ARE DESIGNED TO A TYPICAL SUSPENSION WORKING LOAD OF 1,000 lbs. (4.5 KN), WITH A FACTOR OF SAFETY OF 4 AGAINST FRACTURE OR DETACHMENT.
- IT IS THE RESPONSIBILITY OF THE STRUCTURAL ENGINEER FOR THE OVERALL PROJECT TO ENSURE THAT THE STRUCTURE ON WHICH THE SAFETY EQUIPMENT BY PRO-BEL IS INSTALLED, IS REINFORCED TO WITHSTAND THE LOADS INDICATED ON THIS DRAWING.



**PRO-BEL ENTERPRISES LTD.**  
 765 WESTNEY ROAD S., AJAX, ONTARIO L1S 6W1  
 TEL: (905) 427-0616 FAX: (905) 427-2545  
 1(800) 461-0575  
 VISIT OUR WEB SITE @ [WWW.PRO-BEL.CA](http://WWW.PRO-BEL.CA)

PRO-BEL DESIGNS, MANUFACTURES, AND INSTALLS PRE-ENGINEERED WINDOW CLEANING/SUSPENDED MAINTENANCE EQUIPMENT & FALL PROTECTION SYSTEMS

- ROOF & WALL ANCHORS
- OUTRIGGER BEAMS
- POWERED PLATFORMS
- RIGGING SLEEVES
- DAVITS
- HORIZONTAL LIFELINE SYSTEMS
- MONORAIL SYSTEMS
- ROOF CARS
- GANTRIES
- LADDERS & GUARDRAILS
- MATERIALS WINCH-HOISTS
- STABILIZATION SYSTEMS & more....

# BOLT THROUGH - HORIZONTAL RIGGING SLEEVE ASS'Y (5x4 FIXED SLEEVE, TYP.) - 2 POSTS

PRODUCT ID:

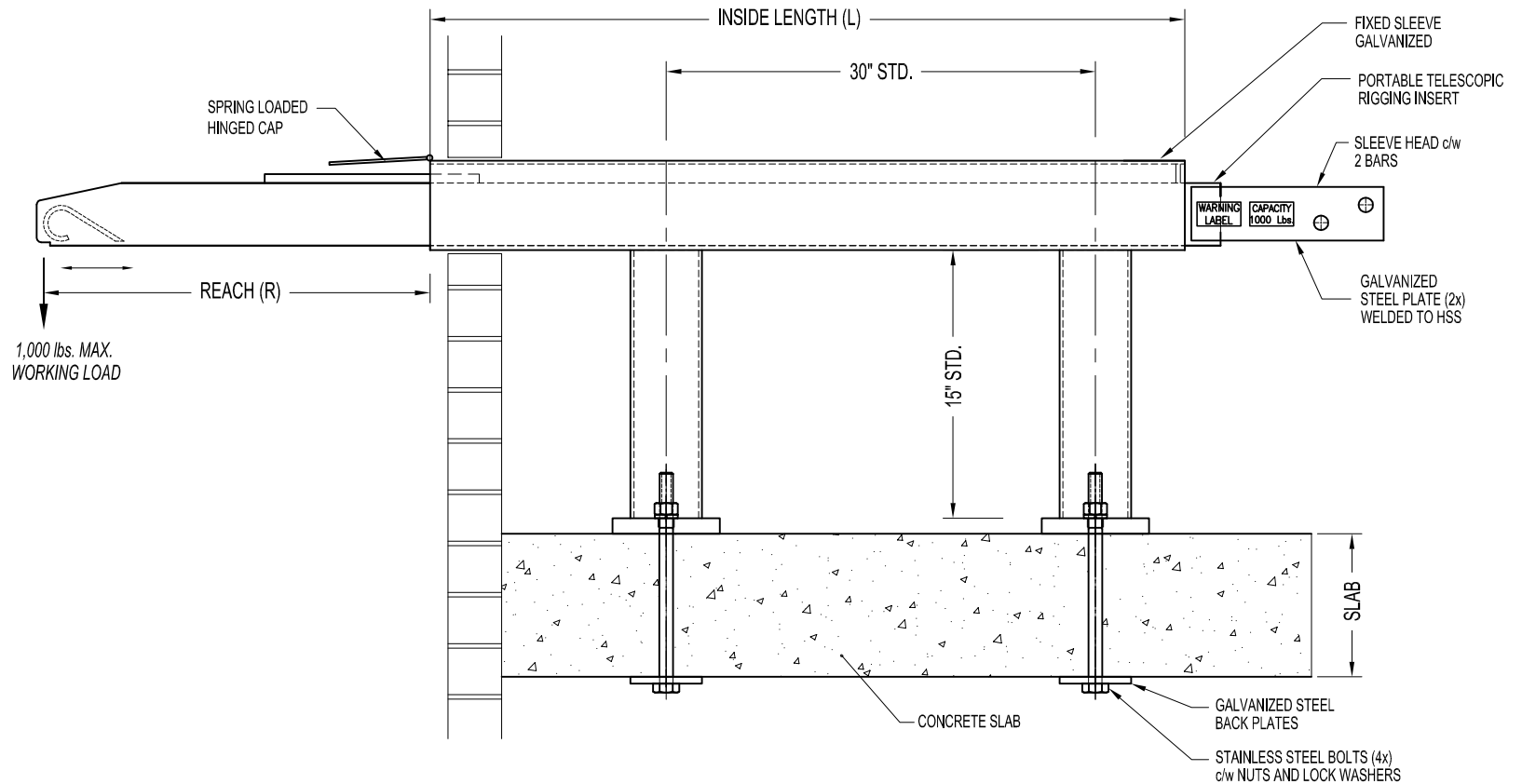
A-RSH54212

SHEET NO.

01

**NOTES:**

- 1,000 lbs. WORKING LOAD IN VERTICAL DIRECTION.
- ASSEMBLY SHOWN IS 2-BARS SLEEVE DESIGN. WORKER'S LIFELINE TO BE TIED TO THE SECOND BAR ON SLEEVE HEAD.
- MINIMUM CONCRETE SLAB THICKNESS IS 6".



**IMPORTANT:**

- RIGGING SLEEVES ARE DESIGNED TO A TYPICAL SUSPENSION WORKING LOAD OF 1,000 lbs. (4.5 KN), WITH A FACTOR OF SAFETY OF 4 AGAINST FRACTURE OR DETACHMENT.
- IT IS THE RESPONSIBILITY OF THE STRUCTURAL ENGINEER FOR THE OVERALL PROJECT TO ENSURE THAT THE STRUCTURE ON WHICH THE SAFETY EQUIPMENT BY PRO-BEL IS INSTALLED, IS REINFORCED TO WITHSTAND THE LOADS INDICATED ON THIS DRAWING.



**PRO-BEL ENTERPRISES LTD.**  
 765 WESTNEY ROAD S., AJAX, ONTARIO L1S 6W1  
 TEL: (905) 427-0616 FAX: (905) 427-2545  
 1(800) 461-0575  
 VISIT OUR WEBSITE @ WWW.PRO-BEL.CA

PRO-BEL DESIGNS, MANUFACTURES, AND INSTALLS PRE-ENGINEERED WINDOW CLEANING/SUSPENDED MAINTENANCE EQUIPMENT & FALL PROTECTION SYSTEMS

- ROOF & WALL ANCHORS
- OUTRIGGER BEAMS
- POWERED PLATFORMS
- RIGGING SLEEVES
- DAVITS
- HORIZONTAL LIFELINE SYSTEMS
- MONORAIL SYSTEMS
- ROOF CARS
- GANTRIES
- LADDERS & GUARDRAILS
- MATERIALS WINCH-HOISTS
- STABILIZATION SYSTEMS & more....