



Pro-Bel Group Ltd.
765 Westney Road South
Ajax, Ontario, Canada L1S 6W1

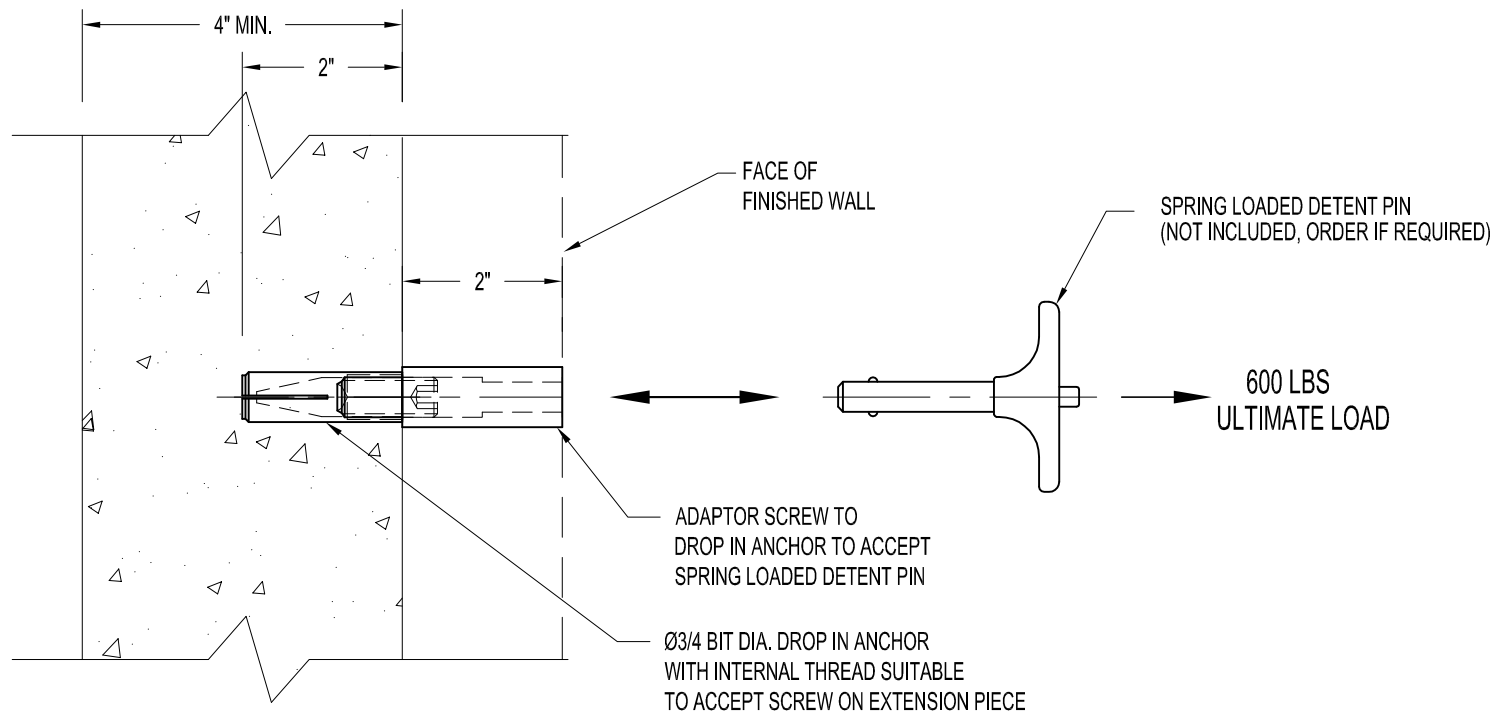
Toll Free: (800) 461-0575
Tel: (905)-427-0616
Fax: (905)-427-2545
Email: info@pro-belgroup.com

NOTES:

1. 600 lbs. ULTIMATE LOAD IN ANY DIRECTION.
2. MODEL SHOWN TO SUIT SPRING LOADED (QUICK-RELEASE) DETENT PIN.

IMPORTANT:

1. IT IS THE RESPONSIBILITY OF THE STRUCTURAL ENGINEER FOR THE OVERALL PROJECT TO ENSURE THAT THE STRUCTURE ON WHICH THE SAFETY EQUIPMENT BY PRO-BEL IS INSTALLED, IS REINFORCED TO WITHSTAND THE LOADS INDICATED ON THIS DRAWING.



A-STB-D1306B-02: DROP IN EXPANSION TYPE STABILIZATION TO ACCEPT SPRING LOADED DETENT PIN