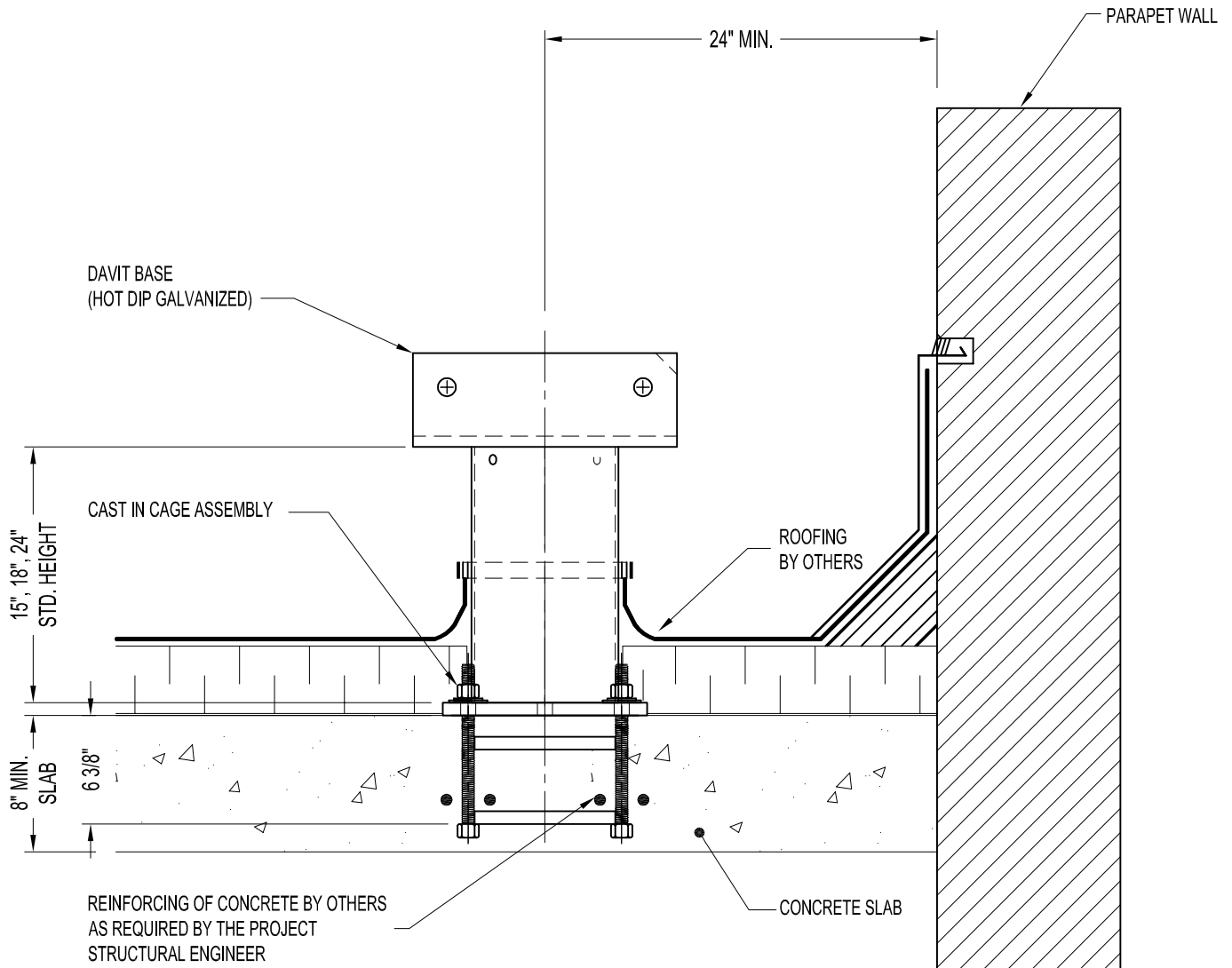


NOTES:

1. 1,000 lbs. WORKING LOAD.
2. 200 SERIES DAVIT BASE (BENT PLATE) ASSEMBLY SHOWN AS CAST INTO CONCRETE SLAB (DAVIT CAGE).
3. ASSEMBLY SHOWN IS STANDARD 15", 18", 24" HIGH MODELS FOR MIN. SLAB THICKNESS OF 8".

IMPORTANT:

1. DAVIT BASES ARE DESIGNED TO A TYPICAL SUSPENSION LOAD OF 1,000 lbs. (4.5 KN), WITH A FACTOR OF SAFETY OF 4 AGAINST FRACTURE OR DETACHMENT.
2. IT IS THE RESPONSIBILITY OF THE STRUCTURAL ENGINEER FOR THE OVERALL PROJECT TO ENSURE THAT THE STRUCTURE ON WHICH THE SAFETY EQUIPMENT BY PRO-BEL IS INSTALLED, IS REINFORCED TO WITHSTAND THE LOADS INDICATED ON THIS DRAWING.



**DB2-23103: 200 SERIES DAVIT BASE ASSEMBLY (CAST IN CAGE) - WITHOUT U-BAR**