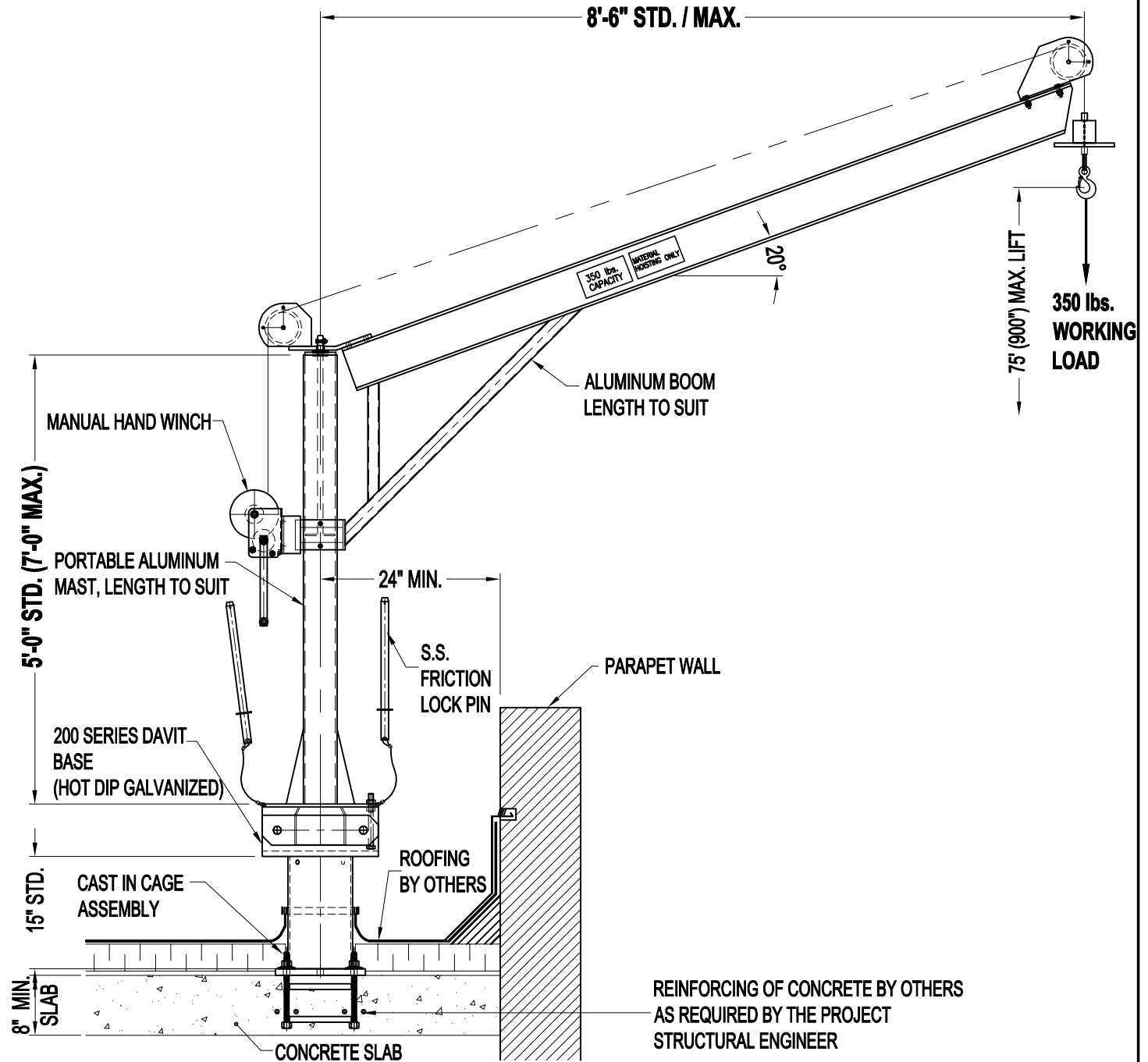


NOTES:

1. SYSTEM SHOWN BELOW IS FOR MATERIAL HANDLING USAGE APPLICATION WITH 350 lbs. WORKING LOAD.
2. ASSEMBLY SHOWN IS MANUAL HOIST ARM, 200 DAVIT BASE (BENT PLATE) w/ NO U-BAR, AND CAST IN CAGE.



IMPORTANT:

1. MANUAL HOISTS ARE DESIGNED TO A TYPICAL SUSPENSION LOAD OF 350 lbs. (1.6 KN), WITH A FACTOR OF SAFETY OF 2 AGAINST FRACTURE OR DETACHMENT.
2. IT IS THE RESPONSIBILITY OF THE STRUCTURAL ENGINEER FOR THE OVERALL PROJECT TO ENSURE THAT THE STRUCTURE ON WHICH THE SAFETY EQUIPMENT BY PRO-BEL IS INSTALLED, IS REINFORCED TO WITHSTAND THE LOADS INDICATED ON THIS DRAWING.



PRO-BEL ENTERPRISES LTD.
 765 WESTNEY ROAD S., AJAX, ONTARIO L1S 6W1
 TEL: (905) 427-0616 FAX: (905) 427-2545
 1(800) 461-0575
 VISIT OUR WEBSITE @ WWW.PRO-BEL.CA

PRO-BEL DESIGNS, MANUFACTURES, AND INSTALLS PRE-ENGINEERED WINDOW CLEANING/SUSPENDED MAINTENANCE EQUIPMENT & FALL PROTECTION SYSTEMS

- ROOF & WALL ANCHORS
- OUTRIGGER BEAMS
- POWERED PLATFORMS
- RIGGING SLEEVES
- DAVITS
- HORIZONTAL LIFELINE SYSTEMS
- MONORAIL SYSTEMS
- ROOF CARS
- GANTRIES
- LADDERS & GUARDRAILS
- MATERIALS WINCH-HOISTS
- STABILIZATION SYSTEMS & more....