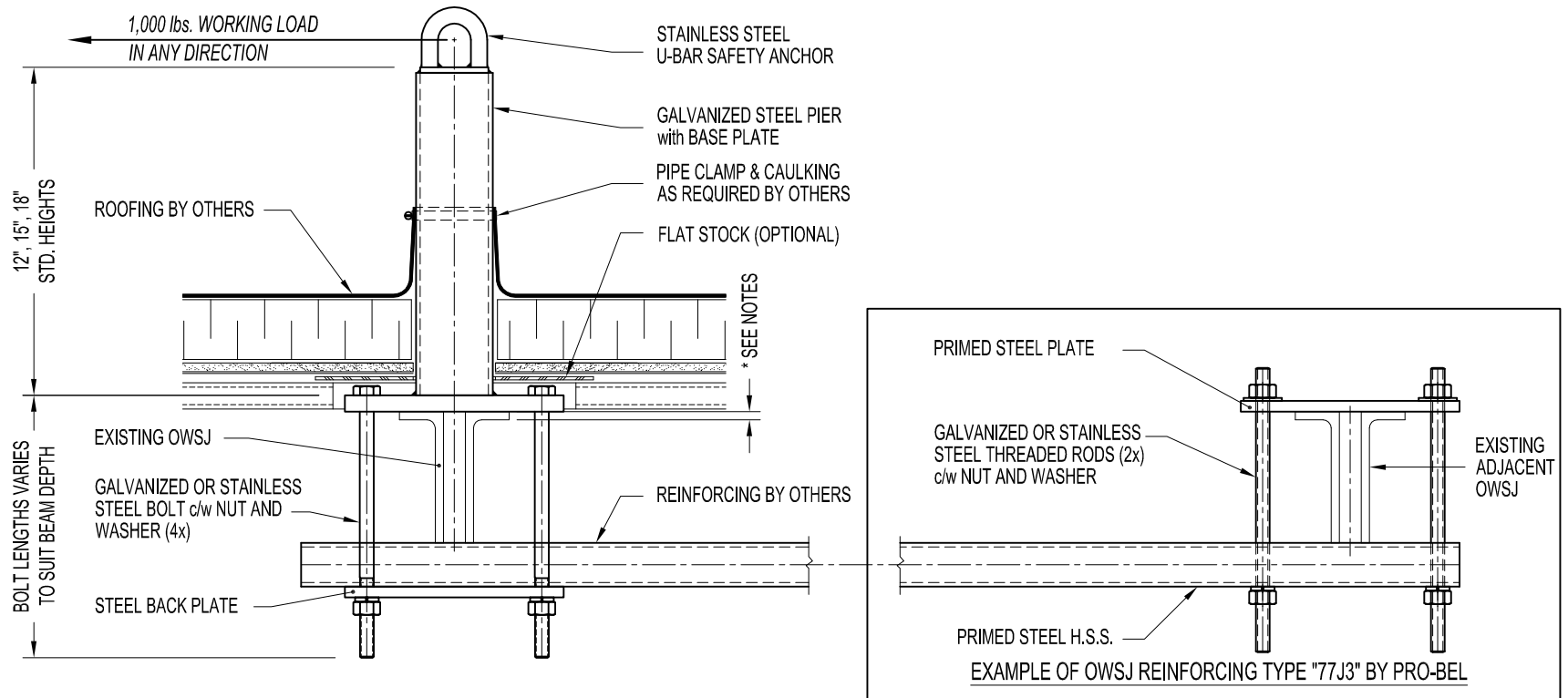


NOTES:

- 1,000 lbs. WORKING LOAD IN ANY DIRECTION.
- ASSEMBLY AVAILABLE IN 12", 15" AND 18" STANDARD HEIGHTS FOR WRAPPING AROUND OPEN WEB STEEL JOIST (OWSJ).
- ASSEMBLY SHOWN WITH CONVENTIONAL SINGLE PLY ROOFING (BY OTHERS). - NO FLASHING
- FOR ANCHOR HEIGHT OF 15", OWSJ TOP CHORD FLANGE THICKNESS NEEDS TO BE 1/4" MIN.
FOR ANCHOR HEIGHT OF 18", OWSJ TOP CHORD FLANGE THICKNESS NEEDS TO BE 5/16" MIN.

IMPORTANT:

- THE SAFETY ANCHOR HAS BEEN DESIGNED TO ENSURE THAT FRACTURE OR DETACHMENT DOES NOT OCCUR WITH A 5,000 lbs. (22.2 KN) LOAD.
- IT IS THE RESPONSIBILITY OF THE STRUCTURAL ENGINEER FOR THE OVERALL PROJECT TO ENSURE THAT THE STRUCTURE ON WHICH THE SAFETY EQUIPMENT BY PRO-BEL IS INSTALLED, IS REINFORCED TO WITHSTAND THE LOADS INDICATED ON THIS DRAWING.



PBE77: WRAP AROUND EXISTING OWSJ ROOF ANCHOR

MAX. LIMIT = 18"