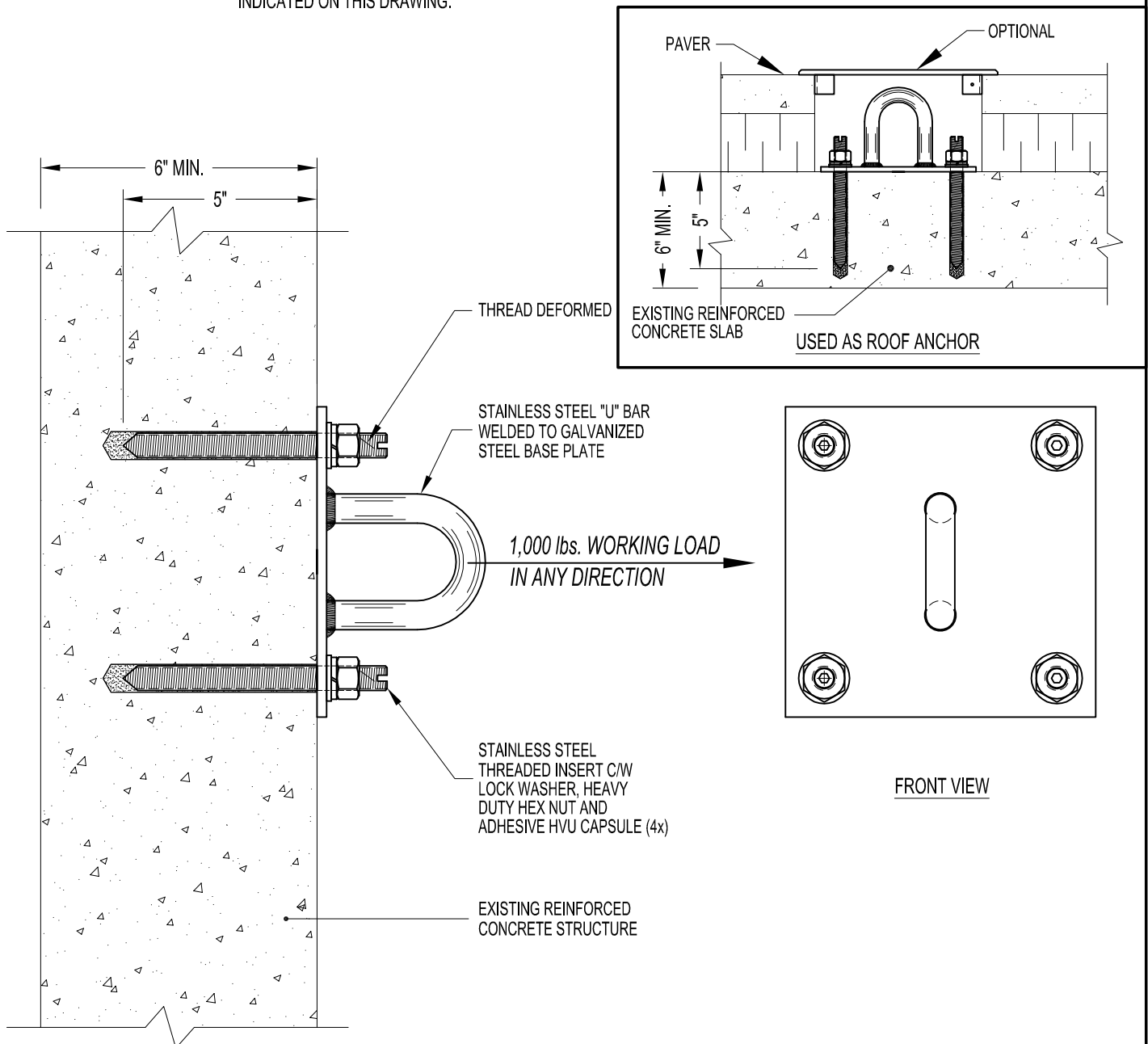


NOTES:

1. 1,000 lbs. WORKING LOAD IN ANY DIRECTION.
2. ASSEMBLY SHOWN AS INSTALLED THROUGH EXISTING REINFORCED CONCRETE WALL / SLAB.
3. MINIMUM CONCRETE WALL / SLAB THICKNESS IS 6".
4. ALL ADHESIVE ANCHORS MUST BE LOAD TESTED.
5. ASSEMBLY GENERALLY FOR HEAVY DUTY OPTION AS END ANCHOR FOR DOUBLE LANYARD SYSTEM.

IMPORTANT:

1. THE SAFETY ANCHOR HAS BEEN DESIGNED TO ENSURE THAT FRACTURE OR DETACHMENT DOES NOT OCCUR WITH A 5,000 lbs. (22.2 KN) LOAD.
2. IT IS THE RESPONSIBILITY OF THE STRUCTURAL ENGINEER FOR THE OVERALL PROJECT TO ENSURE THAT THE STRUCTURE ON WHICH THE SAFETY EQUIPMENT BY PRO-BEL IS INSTALLED, IS REINFORCED TO WITHSTAND THE LOADS INDICATED ON THIS DRAWING.



PB48S-B4S: ADHESIVE WALL / ROOF ANCHOR (FOUR STUDS) - HEAVY DUTY